



HITEC

**Power
Protection**

**CONTINUOUS POWER
IN YOUR CONTROL**





June 16, 2016

Almelo, The Netherlands
荷兰阿莫罗

Presentation *Power*PRO2700

**CONTINUOUS POWER
IN YOUR CONTROL**



CONTINUOUS POWER IN YOUR CONTROL

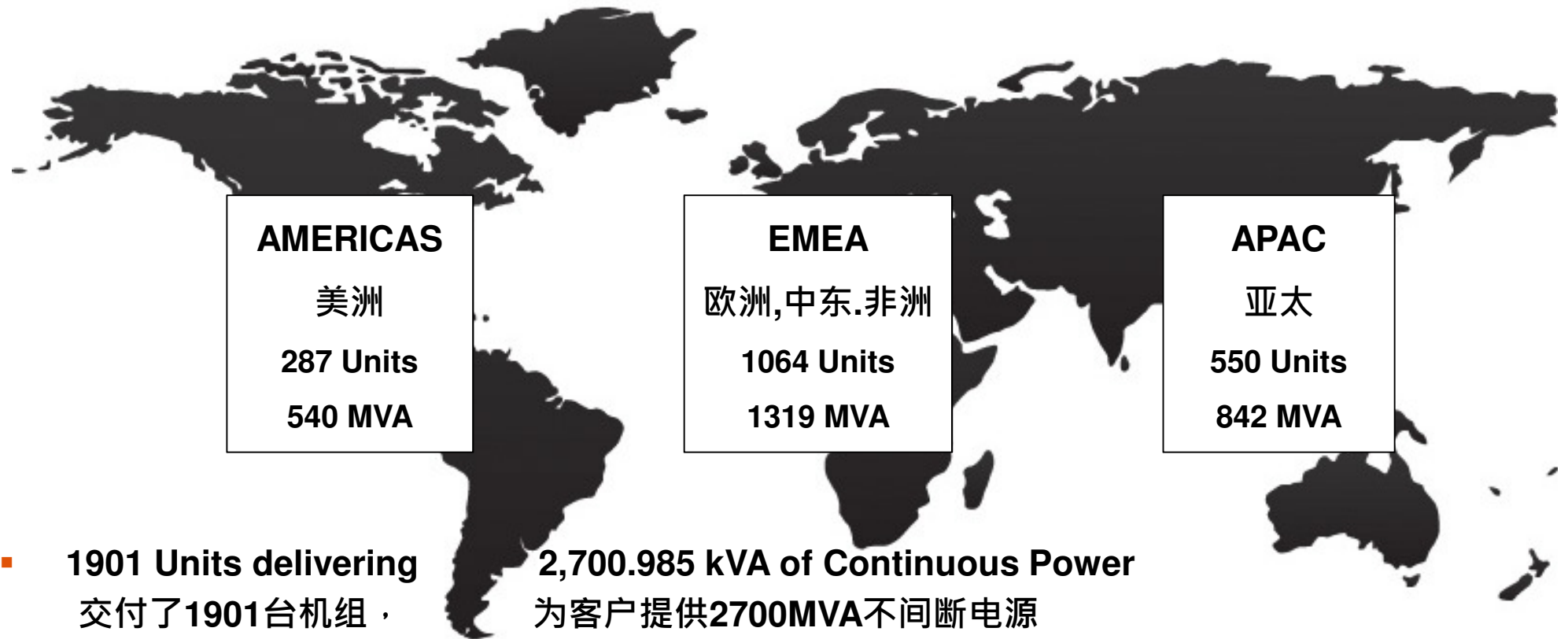
随您所控的不间断电源

- Our company 公司介绍
- The power of our products 产品优势
- Global service partner to rely on 可信赖的全球服务伙伴

CONTINUOUS POWER
IN YOUR CONTROL



Unequalled Installed Base 遥遥领先的用户基础



**CONTINUOUS POWER
IN YOUR CONTROL**



Unrivalled Global Presence 出众的全球业务



**CONTINUOUS POWER
IN YOUR CONTROL**



Complete Global Coverage 全球覆盖



**CONTINUOUS POWER
IN YOUR CONTROL**



Complete Customer Support 完善的客户支持

- Strategically located regional service and support centres
区域性战略服务和技术支持中心
- Regional 24 x 7 x 365 helpdesks 全年365天7x24小时服务台
- Full trained and certified engineers
完全受训且具有资质的服务工程师
- Strategic spares and stock management
战略性的备品备件及库存管理
- Local preventive & corrective maintenance
本地化预防性保养&故障维修
- Operational reports 运行报告
- Service level agreements 服务等级协议
- Customer training & documentation 客户培训&记录
- Service consultancy 服务咨询

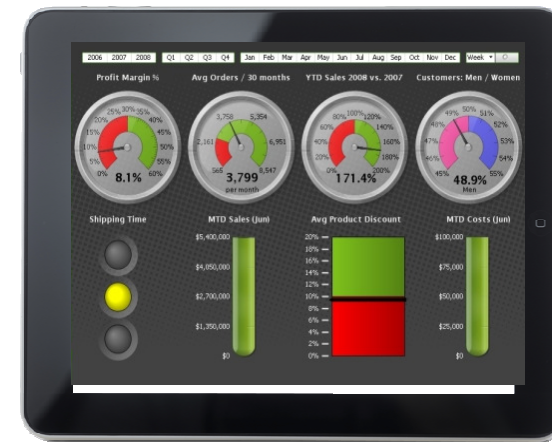


**CONTINUOUS POWER
IN YOUR CONTROL**



Powerful Service Platform 强大的造作平台

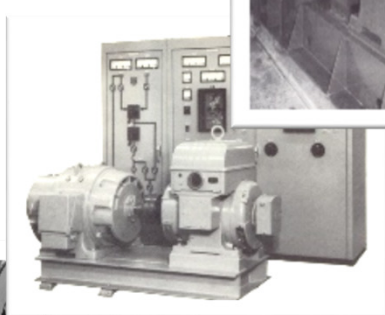
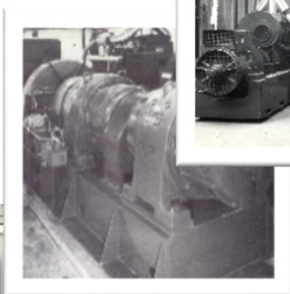
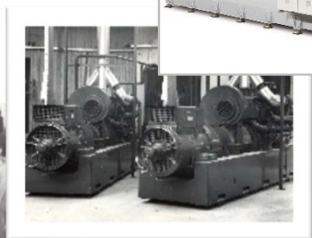
- Intuitive user interface 直观的用户界面
- Status 'at a glance' 状态一览无余
- Advanced remote connectivity 先进的远程连接
- Extensive monitoring 广泛的监测
- Condition-based maintenance 视情维修
- Automated 'health' notification 自动“健康”通知
- Detailed operational reports 详细的运行报告
- Authorisation levels 用户授权等级



**CONTINUOUS POWER
IN YOUR CONTROL**



PowerPRO



- In response to market demand HITEC has developed the PowerPRO series of Dynamic UPS Systems

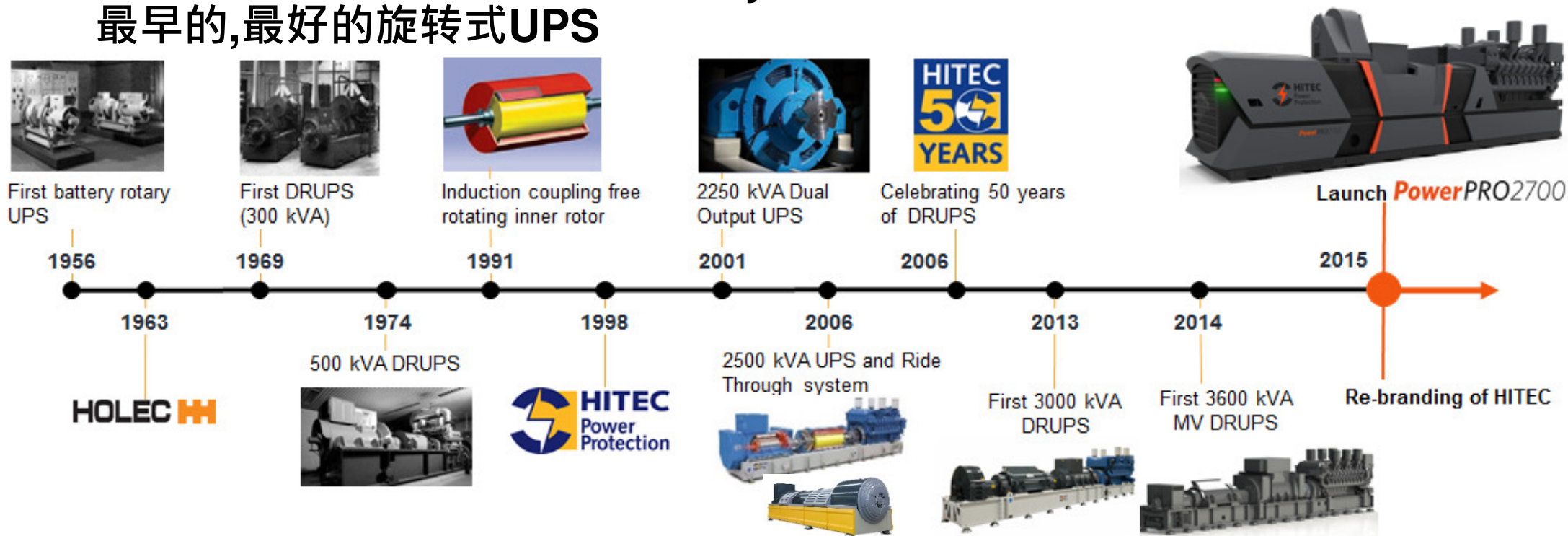
基于市场需求, Hitec开发了 PowerPRO系列动态UPS系统

CONTINUOUS POWER
IN YOUR CONTROL



The First and the Best in Rotary UPS

最早的,最好的旋转式UPS



“HITEC has been driving technology innovation and providing robust and reliable Dynamic UPS systems throughout the world for 60 years”
 60年来，Hitec不断驱动技术革新，为遍及全球的客户 提供坚固可靠的动态UPS系统

**CONTINUOUS POWER
IN YOUR CONTROL**



PowerPRO The New Standard for Continuous Power

PowerPRO 不间断电源的新标准

- Economic 经济的
- Innovative 创新的
- Powerful 强大的
- Efficient 效率高的
- Reliable 可靠的
- Compact 紧凑的
- Intuitive 直观的
- Connected 可连接的
- Sustainable 可持续的
- Straightforward 简单易懂的

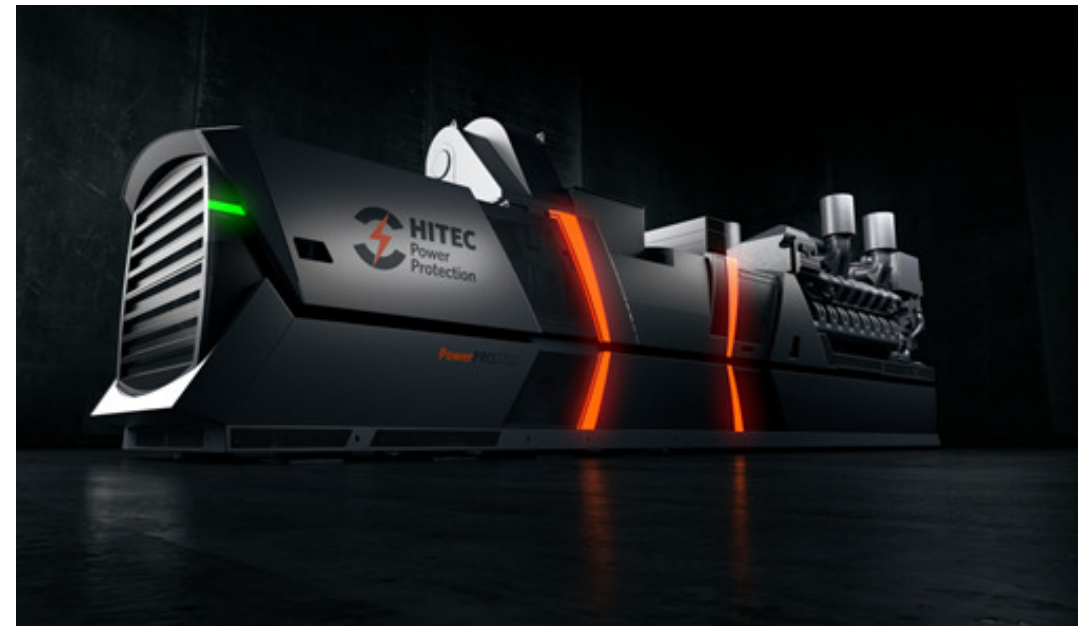


**CONTINUOUS POWER
IN YOUR CONTROL**



PowerPRO The New Standard for Continuous Power 不间断电源的新标准

- **50 Hz:**
1600 kVA - 2200 kVA
- **60 Hz:**
1800 kVA - 2700 kVA

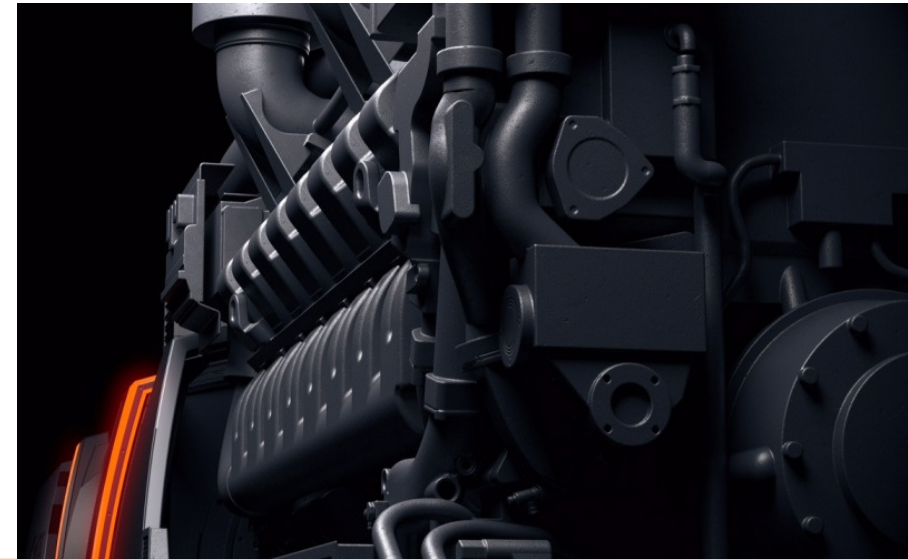


**CONTINUOUS POWER
IN YOUR CONTROL**



Power performance 电气性能

- Available ratings 可用功率:
 - ✓ Emergency standby power (ESP) 备用功率
 - ✓ Prime-rated power (PRP) 主用功率
 - ✓ Continuous output power (COP) 连续功率
 - ✓ Data centre continuous (DCC) 数据中心连续
- Available optimisations 引擎最优化:
 - ✓ Fuel Optimized 燃油最经济
 - ✓ TA-Luft 排放标准
 - ✓ EPA Tier 1 排放标准
 - ✓ EPA Tier 2 (NEA) 排放标准



**CONTINUOUS POWER
IN YOUR CONTROL**



Lowest Operating Cost 最低的运行成本

- **Highest Operating Efficiency 高效率**

Optimised design delivers up to 97.5%

total system efficiency while delivering full power conditioning to the load
经过优化设计后，系统总体效率在满载时最高可达97.5%

- **Maximum Uptime 最大化的运行时间**

Auto-lubrication, smart monitoring, and a highly accessible design results in extended service intervals and reduced service time

自动润滑，智能监测，简单的设计延长了服务间隔，减少了服务时间。

- **Low Service Requirement 低服务需求**

Fewer operational interruptions. Only one shut-down per annum and an overhaul every 10 years
较少的运行中断。一年一次停机保养，每10年一次大修。



**CONTINUOUS POWER
IN YOUR CONTROL**



Most Efficient continuous power solution available 最高效的不间断电源解决方案

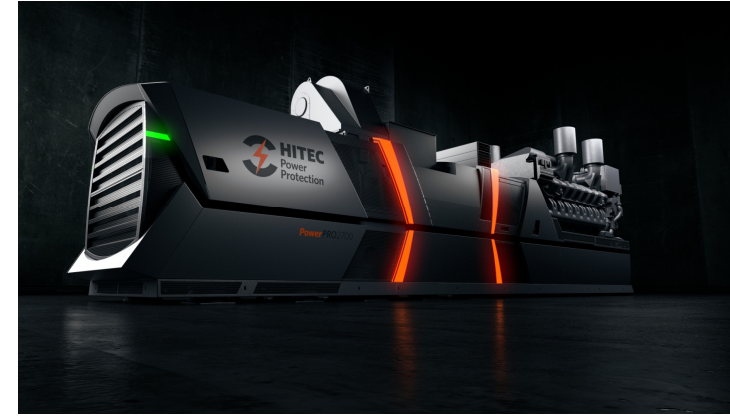
- Reduces operational costs
减少运行成本
- Minimizing environmental impact
最小化环境冲击
- Reduced Carbon Footprint
减少碳排放
- **A+++ System Efficiency**
A+++ 系统效率
- **Up to 97,5%**
高达97.5%



**CONTINUOUS POWER
IN YOUR CONTROL**



Unrivalled Space Savings 最为节省空间



- **Smallest Footprint 最小的占地面积**

Compact design offers >40% space saving over

Static UPS and between 5% to 10% over other DRUPS manufacturers

紧凑设计相比静态UPS可节省40%以上的空间，比其它柴油机旋转式UPS节省5%到10%的空间。

- **Battery-free 无蓄电池**

Releases internal 'white space' within the facility for business expansion and revenue generation 节省的空间可扩展业务，产生收益

- **Compact Design 紧凑设计**

Reducing the building cost and the Gross Floor Area (GFA) lowers rental and increases opportunities for revenue generation

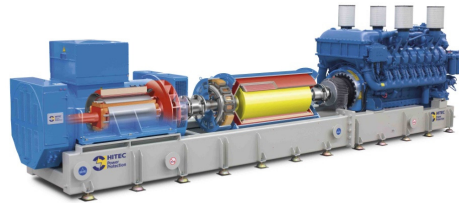
减少建筑成本和建筑面积，降低租金，增加机会创造收益。

**CONTINUOUS POWER
IN YOUR CONTROL**



Smallest Footprint 最小占地面积

- 2000 kVA



Footprint 16,9 m²

- 2000 kVA



Footprint 14,2 m²

- 2000 kVA

Others

Footprint 14,6 m²

CONTINUOUS POWER
IN YOUR CONTROL



Space Saving v's DRUPS 动态UPS空间对比



2000 kVA
Footprint: 16.9 m²
Mass: 25,000 kg



2000 kVA
Footprint: 14.2 m²
Mass: 26,000 kg

**Nearest DRUPS
Competitor**

2000 kVA
Footprint: 14.6 m²
Mass: 27,000 kg



PowerPRO

**5% - 10%
Space Saving**

**CONTINUOUS POWER
IN YOUR CONTROL**



Space Saving v's Static UPS 对比静态UPS

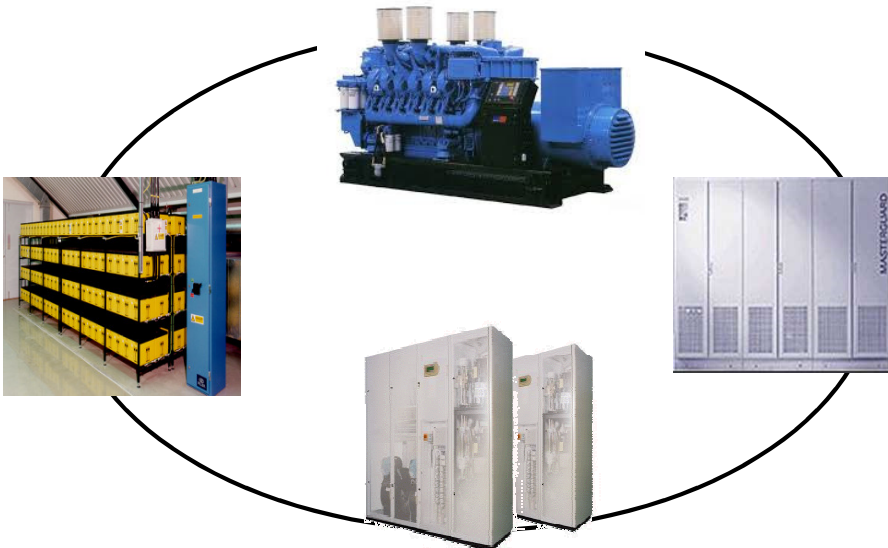


2000 kVA
Footprint: 14.2 m²
Mass: 26,000 kg

PowerPRO

> 40% Space Saving

2000 kVA
Footprint: 24 m²
Mass: 35,000 kg



**CONTINUOUS POWER
IN YOUR CONTROL**



Increased Power Security 提高电力安全

- **Highest Reliability 高可靠性**

Improved design based upon unrivalled experience and recognition of the latest customer requirements
改进的设计，基于多年的经验以及对最新客户需求的认知。

- **Supports all load types 支持所有类型负载**

Continuous support for the cooling equipment simplifies the mechanical system and increases the reliability of the facility
对冷却设备提供不间断保护，简化机械系统，增强设施的可靠性

- **Advanced Communication 先进的通讯**

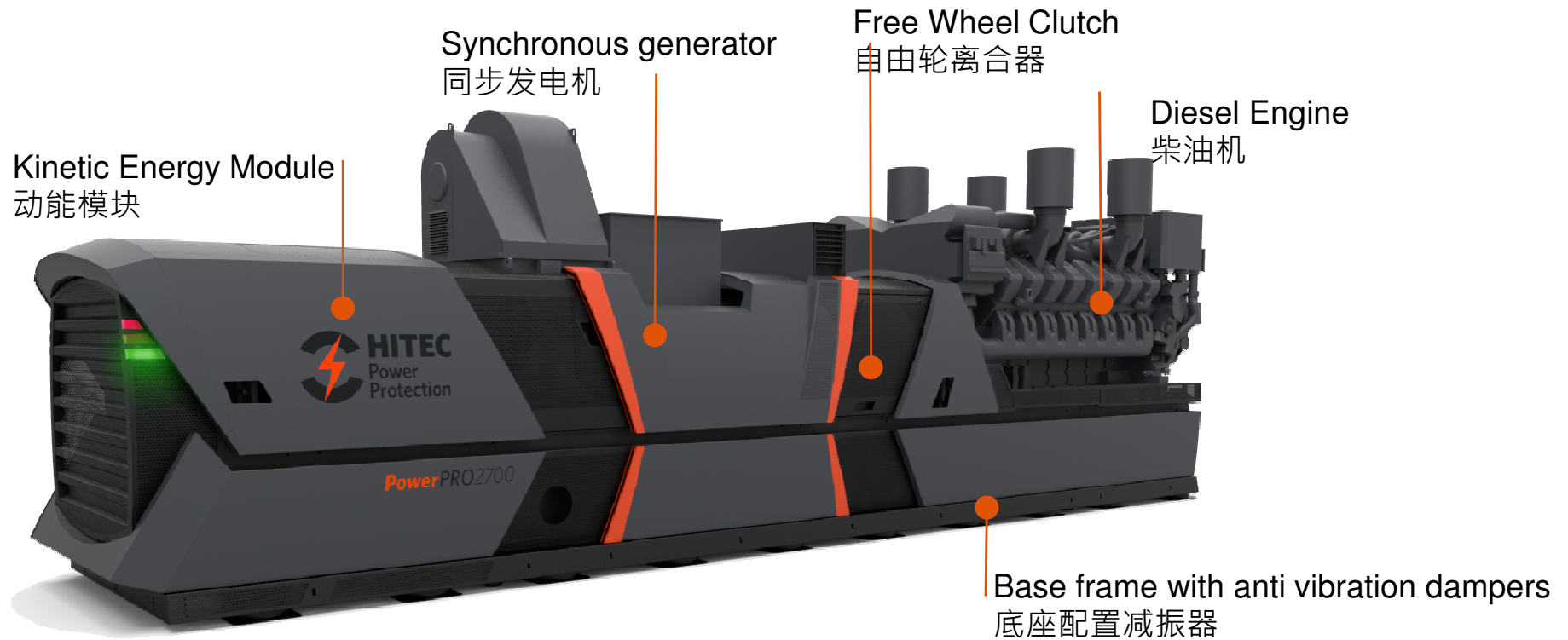
Intuitive communication, advanced monitoring and real-time reporting
直观的信息，先进的监测以及实时报告



**CONTINUOUS POWER
IN YOUR CONTROL**



Proven Technology 成熟技术



**CONTINUOUS POWER
IN YOUR CONTROL**



Operational Innovation 运行创新

Low emission engine
低排放引擎

High efficiency cooling
高效冷却

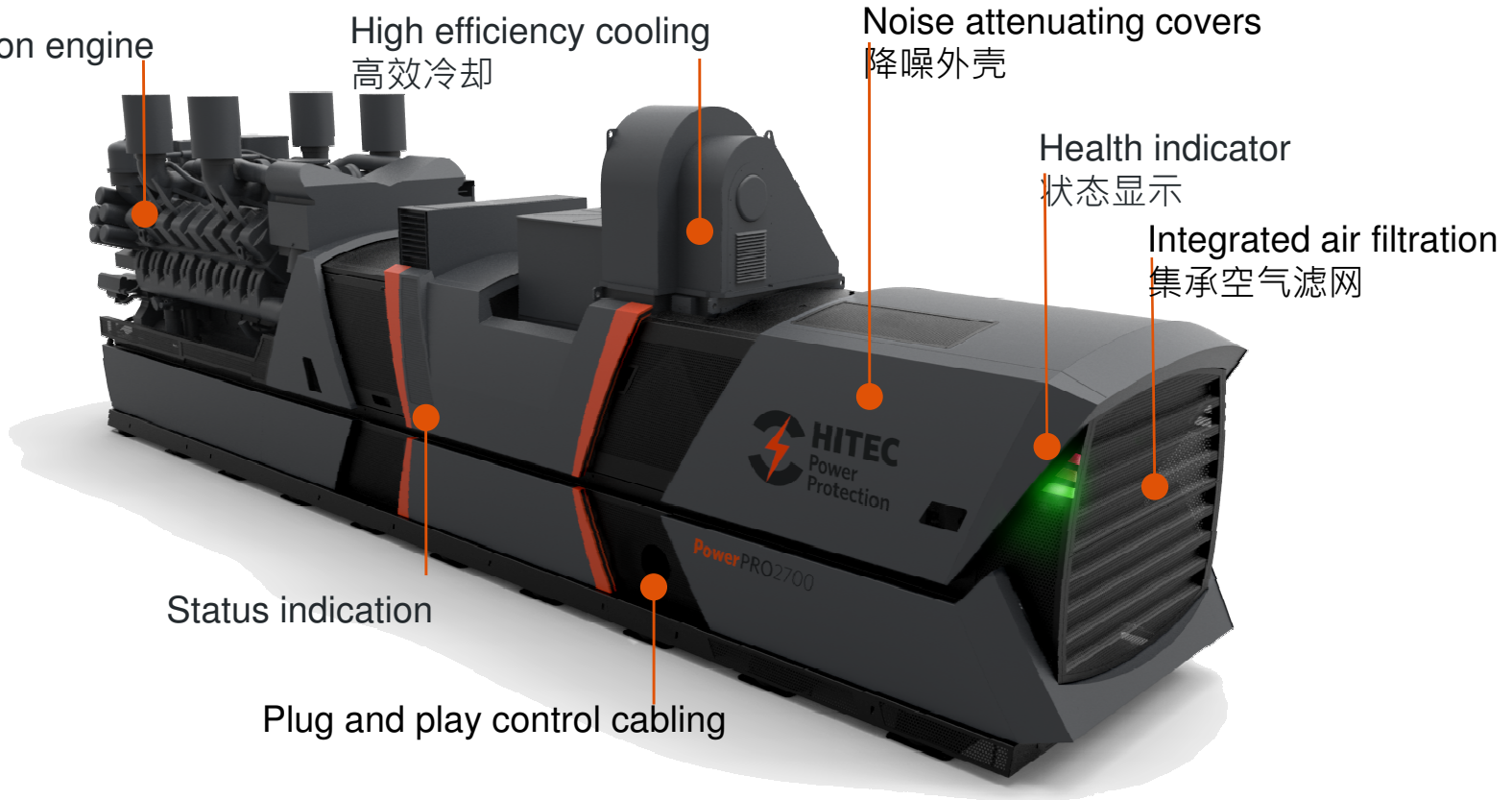
Noise attenuating covers
降噪外壳

Health indicator
状态显示

Integrated air filtration
集承空气滤网

Status indication

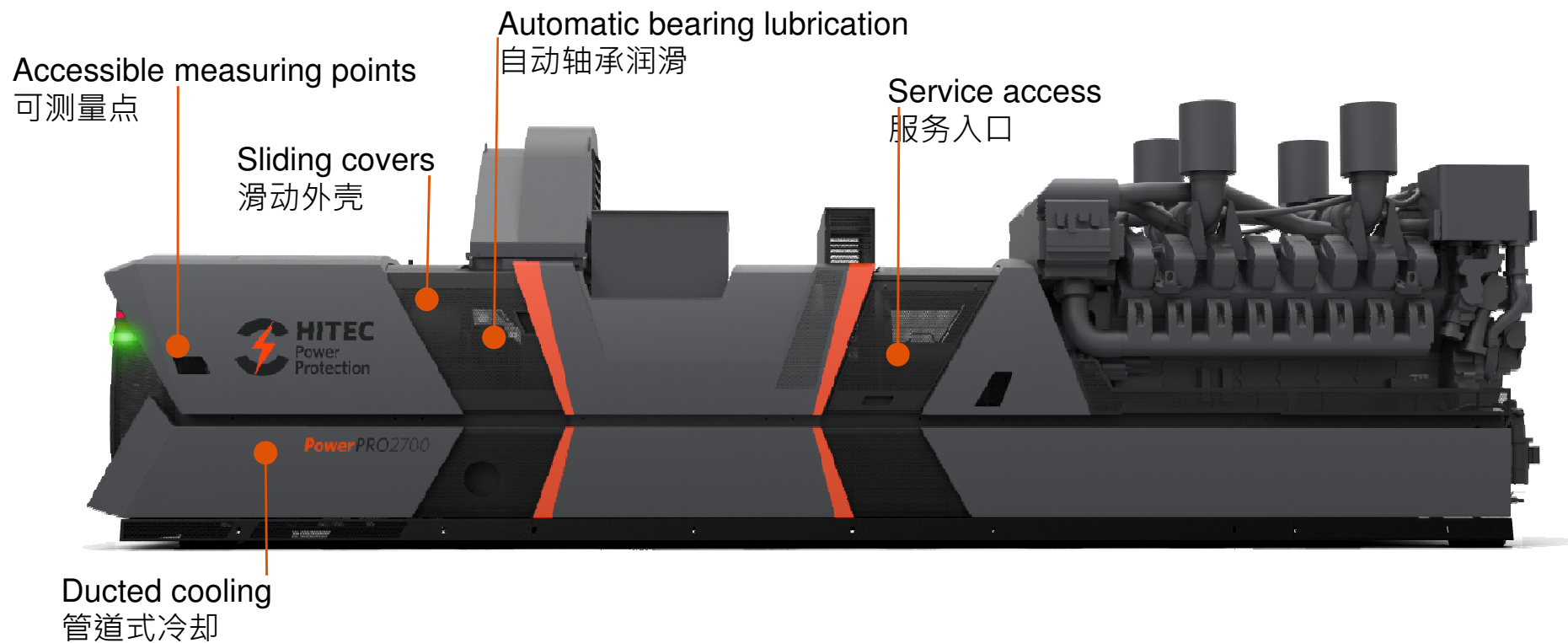
Plug and play control cabling



**CONTINUOUS POWER
IN YOUR CONTROL**



Maximum Uptime 最大化运行时间



**CONTINUOUS POWER
IN YOUR CONTROL**



“One Control Panel” 一体式控制盘

Unit Control 机组控制 +
Control Box 控制箱

Unit Speed-Up
机组加速盘



**CONTINUOUS POWER
IN YOUR CONTROL**



Intuitive Operation and Control 直观的操作和控制

- Improved Control Panel
改进的控制盘
- Full color 5.7" HMI
全彩5.7"人机交互界面
- Latest PLC design
最新PLC设计
- New HITEC Digital Controller
新Hitec数字控制器
- Plug and play
即插即用
- Prefabricated cabling
预制电缆



**CONTINUOUS POWER
IN YOUR CONTROL**



Control Panel控制盘

- Straightforward design
简单设计
- Easy to understand
易懂
- Multi language
多语言
- Reliable
可靠
- Safe
安全

Engine Isolation Switch引擎隔离开关
Key Switch: local/remote control
就地/远程控制
Emergency Stop紧急停车

Alarm警报

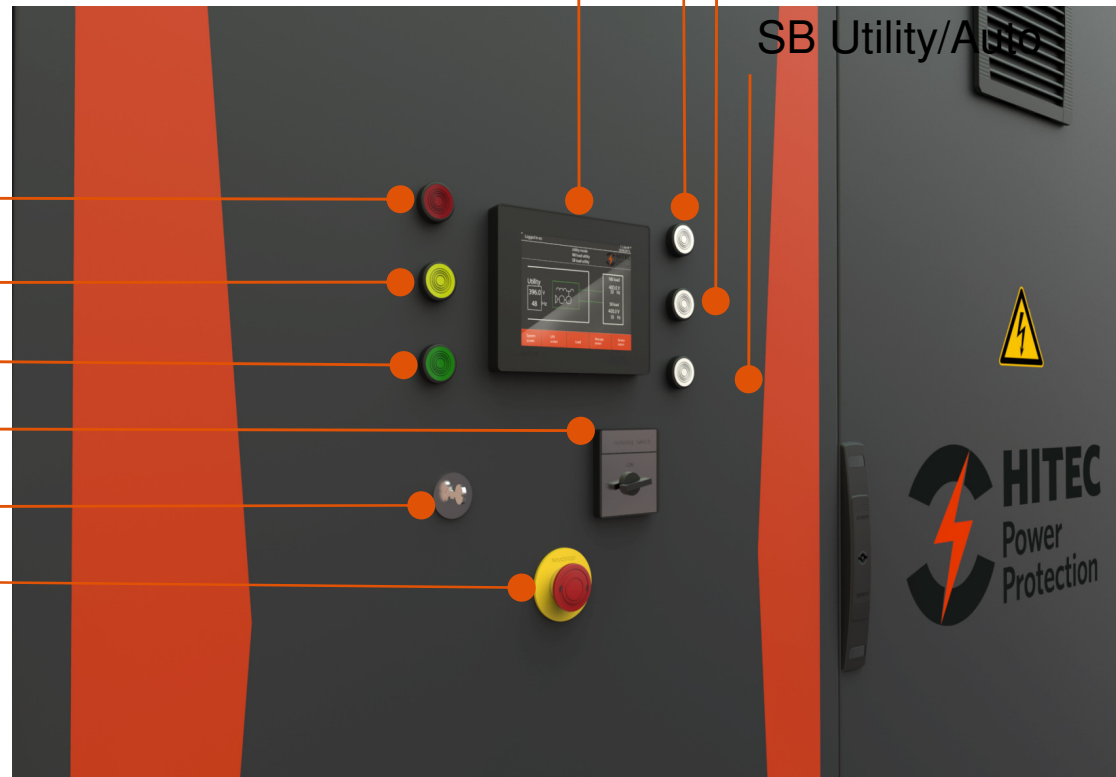
Attention注意

Running运行

Touch screen HMI
触摸屏

Unit ON/OFF开/关机
NB Auto/Bypass
自动/旁路

SB Utility/Auto



CONTINUOUS POWER
IN YOUR CONTROL



Control Panel 控制盘

Dimensions and weight 尺寸重量

- Width宽: 2200 mm
- Depth深: 625 mm
- Height高: 2000 mm
- Footprint面积: 1,32 m²
- Weight重量: 750 kg



**CONTINUOUS POWER
IN YOUR CONTROL**



Ethernet Programmable Automation Controller (ePAC) 以太网可编程自动控制器

- Use of High-tech ePAC with Ethernet built right into its core
使用高科技ePAC并集成以太网络
- Based on latest technology and standards
基于最新技术和标准
- High precision 高精度
- Cyber secure built-in 内置网络安全
- High speed backplane bus 高速主板总线
- Time stamping less than 50 millisecond 时间戳小于50ms



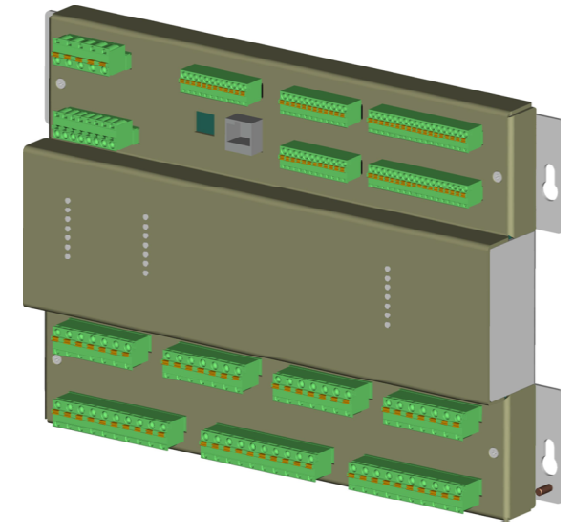
CONTINUOUS POWER
IN YOUR CONTROL



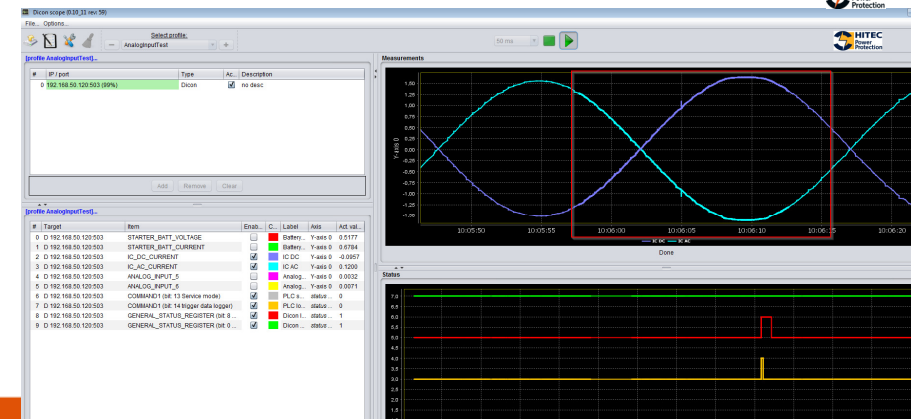
New Digital Controller 2 (DiCon 2) 新数字控制器DiCon 2

- Based on latest technology and standards
基于最新技术和标准
- Ethernet-TCP/IP connected 以太网TCP/IP连接
- Increased logging time 增加记录时间
- Time stamping less than 10 millisecond
时间戳小于50ms
- Latest high precision net-analyser on board
(measures utility harmonic's, THD, unbalance)
最新的高精度分析仪(测量市电谐波, 总谐波失真
不平衡)

Improved start battery monitoring (voltage & current values available)



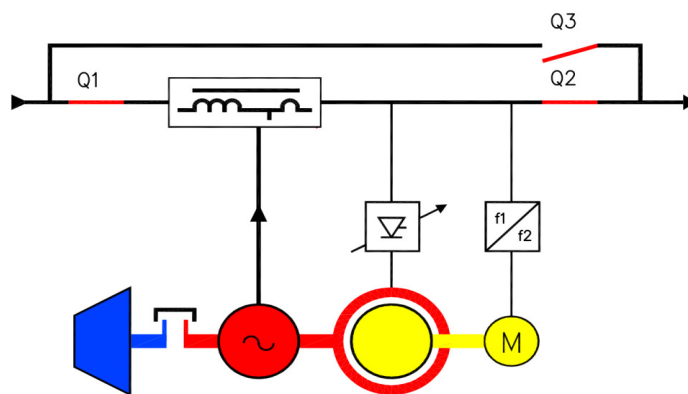
New service monitoring tool (Dicon Scoop Program)
新服务监测工具 (Dicon Scoop 程序)



**CONTINUOUS POWER
IN YOUR CONTROL**



System Operation 系统运行

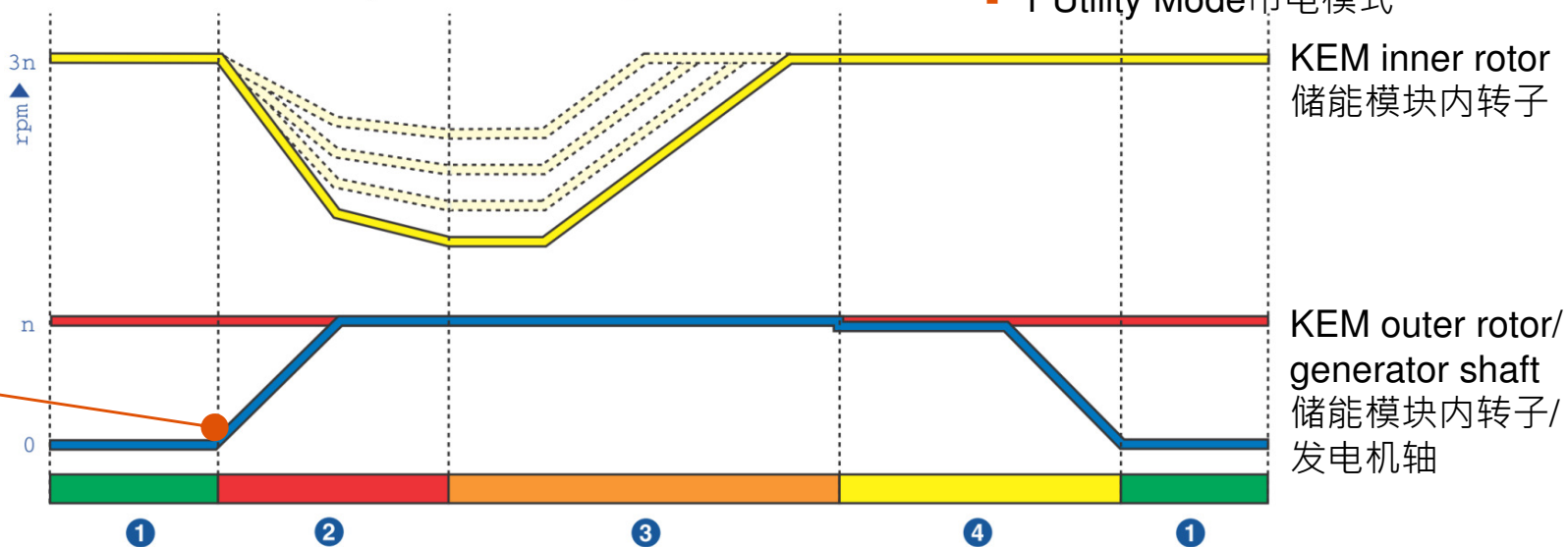


- 1 Utility mode 市电模式
- 2 KEM flywheel mode + engine start 飞轮储能模式 + 引擎启动
- 3 Engine / KEM flywheel mode 引擎/飞轮储能模式
- 4 Cool down/shut mode 冷机/停机模式
- 1 Utility Mode 市电模式

Δ Speed 转速 : 2400 RPM

Utility failure 市电失效:

- Q1 open 断开
- Start engine 启动引擎
- Take energy from inner rotor 从内转子取出能量



**CONTINUOUS POWER
IN YOUR CONTROL**



Lower Energy or Fuel consumption 更低能耗,更低油耗

Flexible Energy Storage Optimisation (ESO) mode

灵活ESO节能模式

- Depending on load levels the ESO speed is calculated (PLC) and set into the Variable Speed Drive (VSD)
基于负荷大小,节能模式下,转速通过PLC计算并设定到VSD
- Ongoing check via speed measurement on the inner rotor
实时检查内转子转速



Diesel Start Delay (DSD) functionality 柴油机启动延迟DSD功能

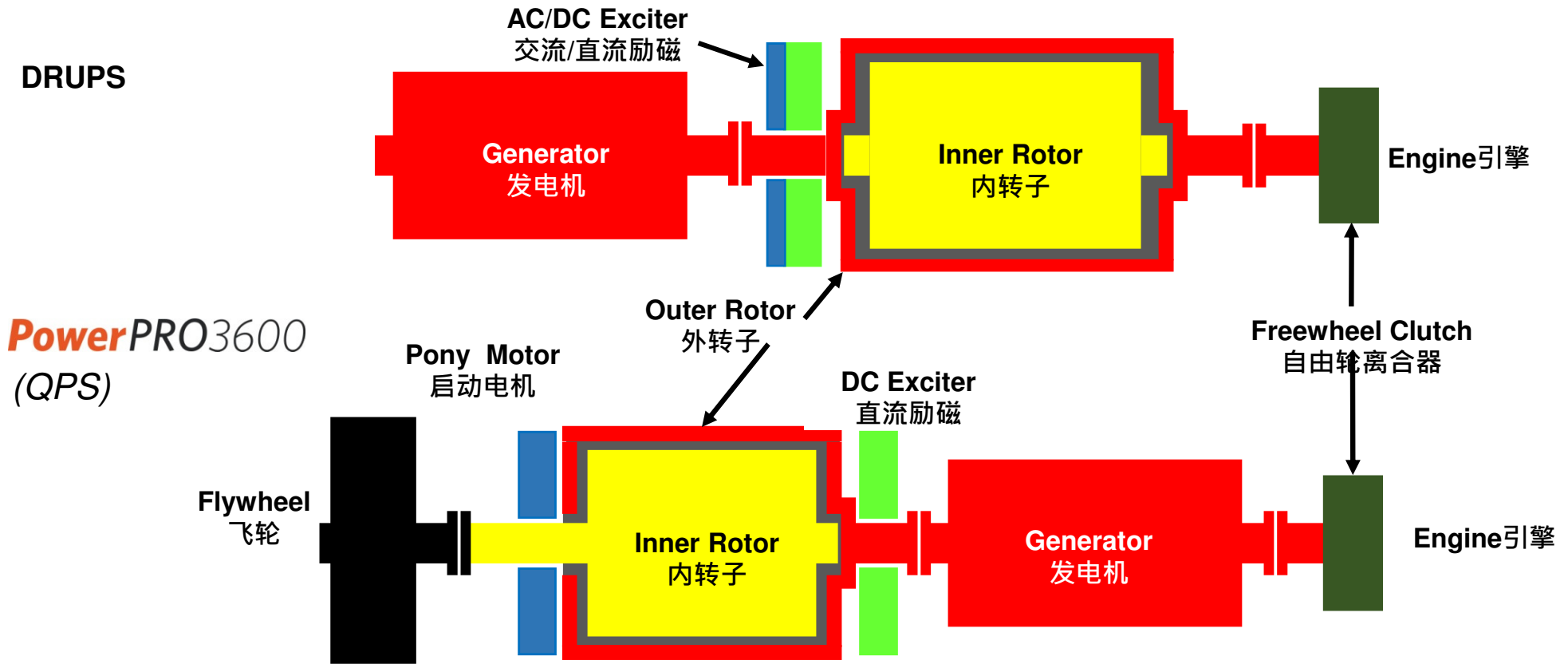
- Upto 2 seconds Diesel Start Delay possible.
可最多延迟2秒启动
- Directly influences ESO levels and KVA rating of the unit.
影响ESO模式等级以及机组的功率kVA



**CONTINUOUS POWER
IN YOUR CONTROL**



PowerPRO Technological Progression 技术沿革



**CONTINUOUS POWER
IN YOUR CONTROL**

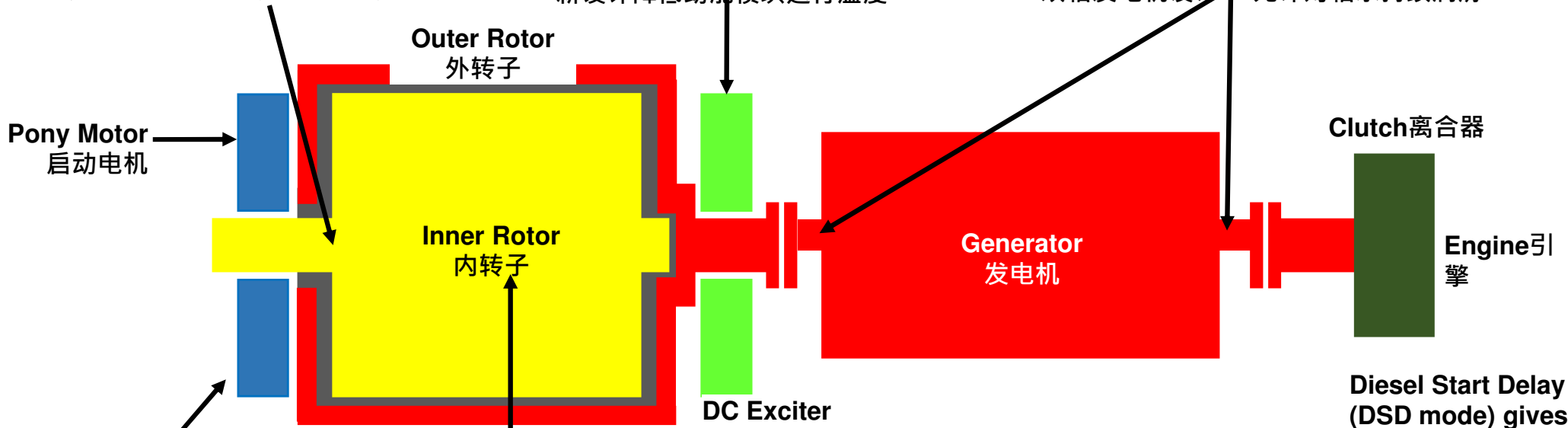


PowerPRO2700 Technological Innovation 技术创新

KEM design allows for continuous lubrication of the outer and inner bearings
 动能模块允许对内外转子持续润滑

KEM design reduces the module operating temperature
 新设计降低动能模块运行温度

Dual-shaft Generator design allows for continuous lubrication of the bearings
 双轴发电机设计，允许对轴承持续润滑



Energy Storage Optimisation (ESO mode) reduces losses and gives load-dependent energy storage
 节能模式减少损耗, 根据负载需要进行储能

Large diameter inner rotor reduces module length and decreases rotational speed
 大直径内转子减少模块长度降低角速度

Dual-shaft Generator is equipped with high efficiency cooling to reduce losses
 双轴发电机配备高效冷却风扇减少损耗

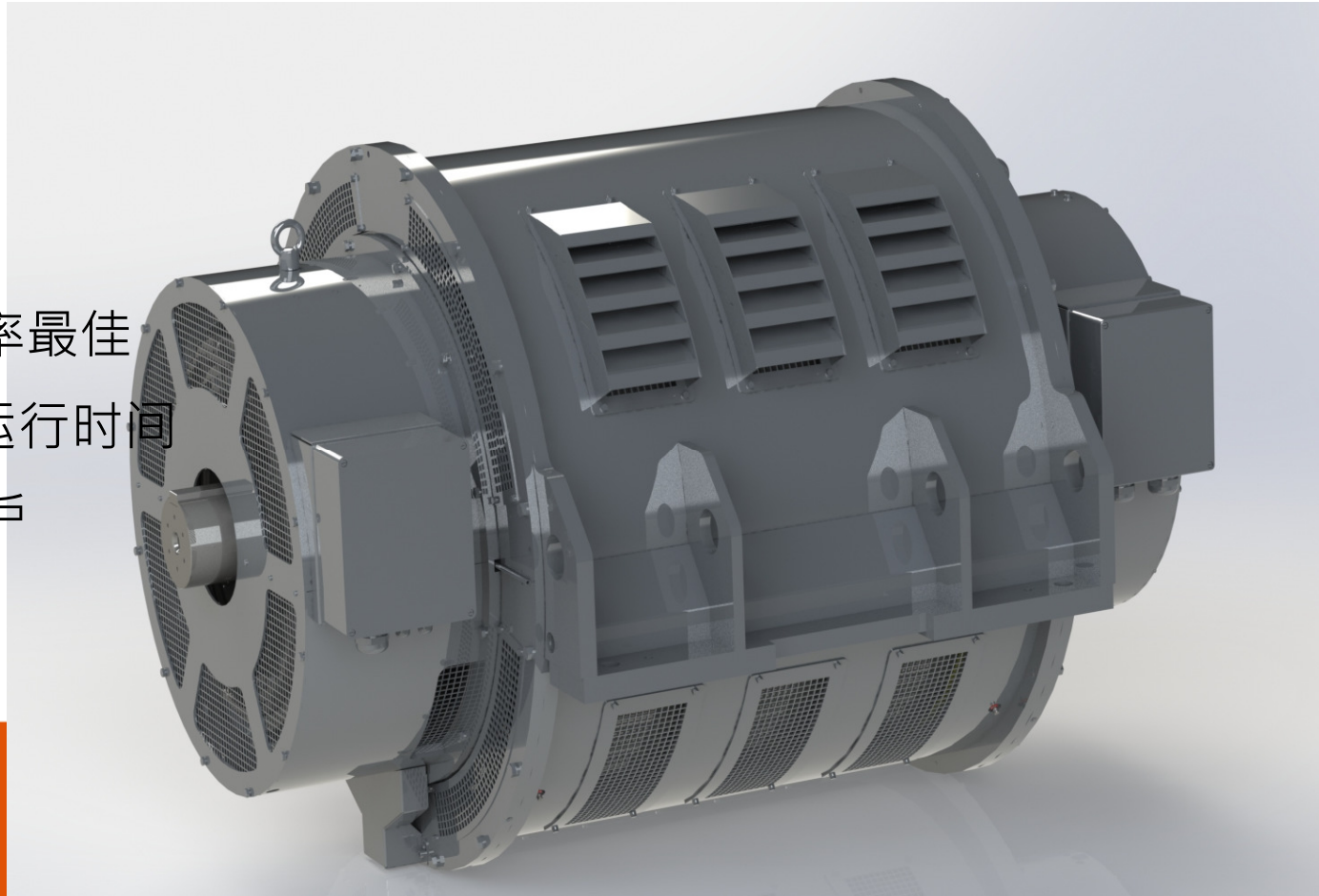
Diesel Start Delay (DSD mode) gives up to 2 seconds delay and reduces fuel usage
 引擎启动延迟多达2s · 减少柴油使用

IN YOUR CONTROL

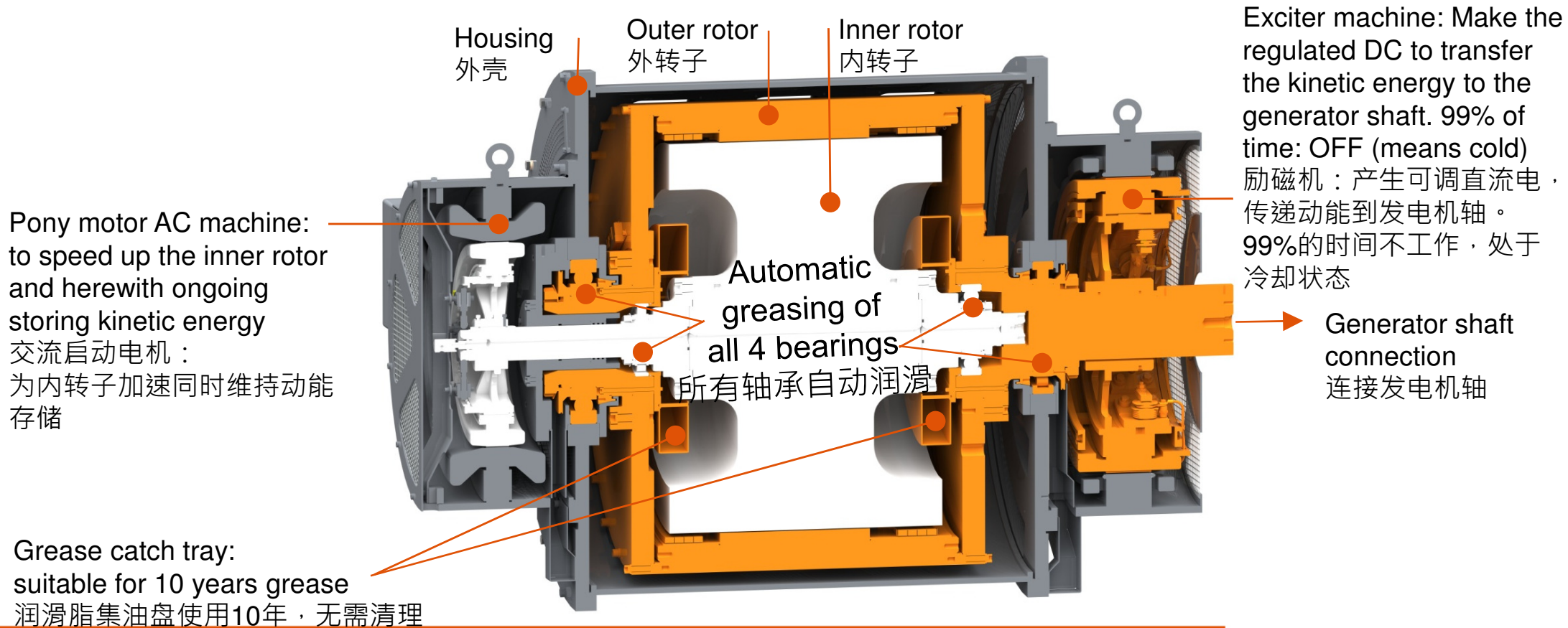


Kinetic Energy Module “World Class design” 动能模块“世界级设计”

- Brushless design 无刷
- Reduced weight 减重
- Compact design 紧凑
- Efficiency optimized 效率最佳
- Increased uptime 提高运行时间
- Low Maintenance 低维护



Kinetic Energy Module “construction” 动能模块结构

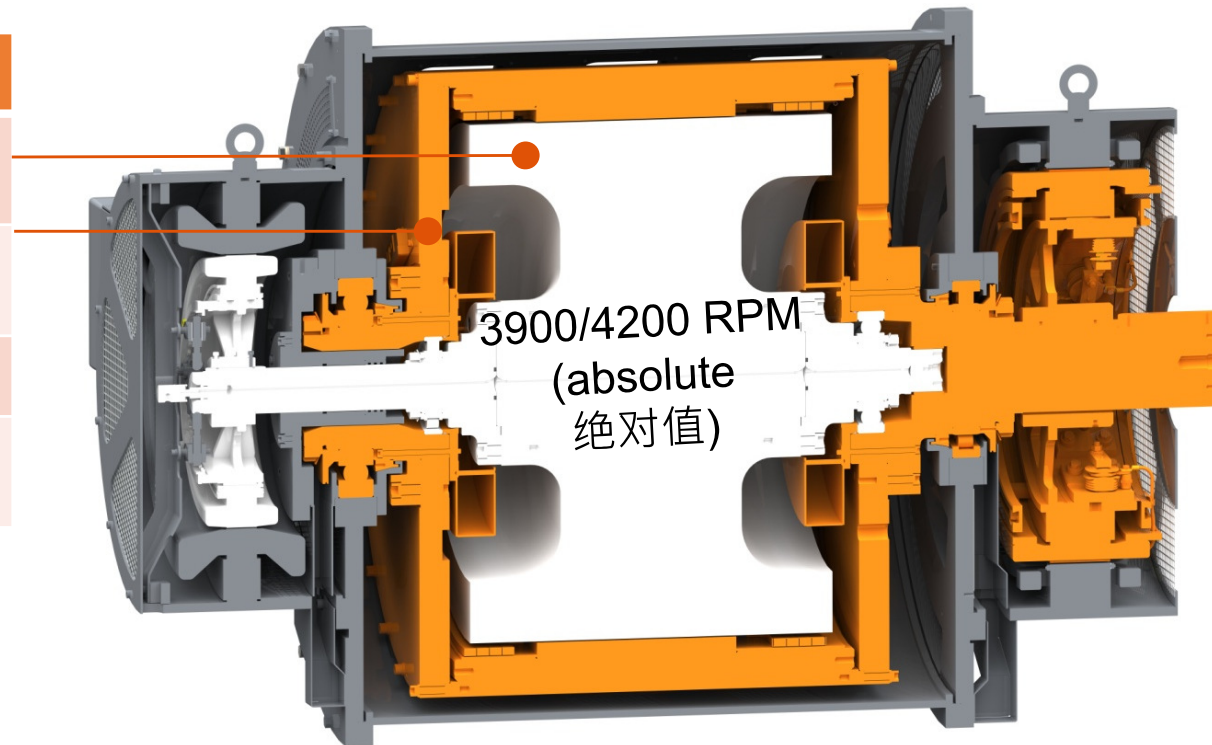


**CONTINUOUS POWER
IN YOUR CONTROL**



Kinetic Energy Module “speed and capability” 动能模块速度和能量

	50 Hz	60 Hz
Speed inner rotor 内转子转速	3.900 rpm	4.200 rpm
Speed outer rotor 外转子转速	1.500 rpm	1.800 rpm
Δ Speed 相对速度	2.400 rpm	2.400 rpm
Power capability 能量	2.200 kVA	2.700 kVA

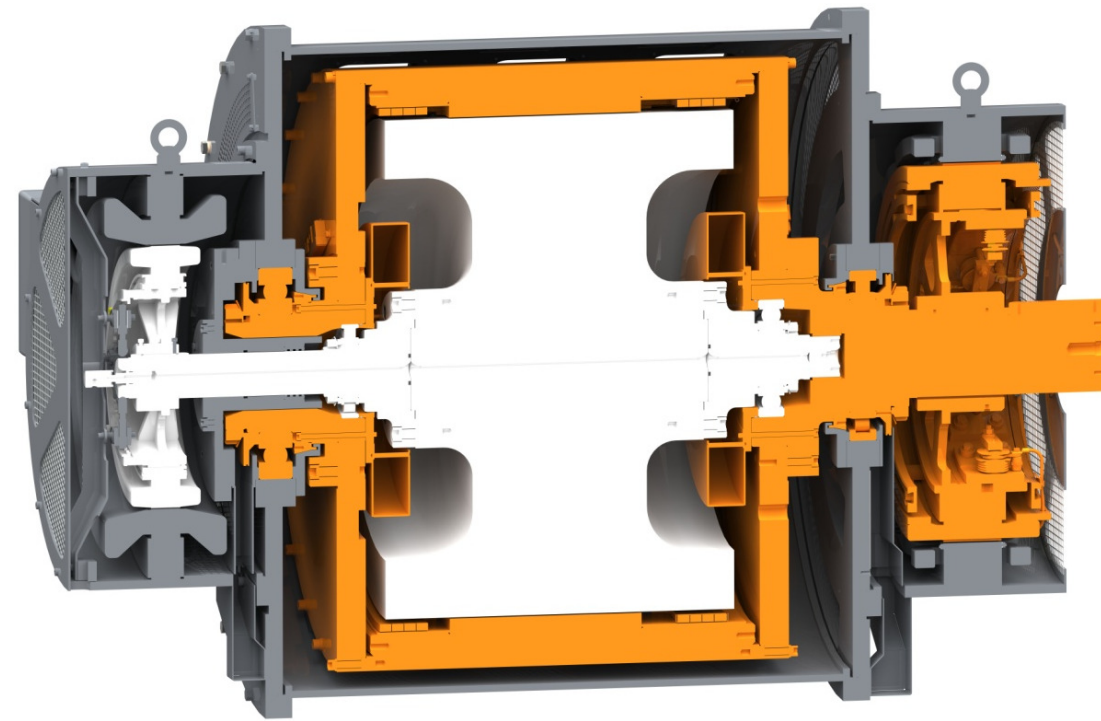


**CONTINUOUS POWER
IN YOUR CONTROL**



Kinetic Energy Module “Automatic bearing lubrication” 动能模块 自动轴承润滑

- Lubrication of KEM and generator bearings
动能模块和发电机轴承润滑
- Daily lubrication of all 6 bearings
6个轴承日常润滑
- 2 grease reservoirs of each 2 Liters
2个润滑脂集贮区，每个2L。
- Refill grease reservoir 1x per year
集贮区每年1次补油
- Grease level and flow detection
润滑脂储量和流量检查
- Control & feedback to monitoring system
控制&反馈到监测系统

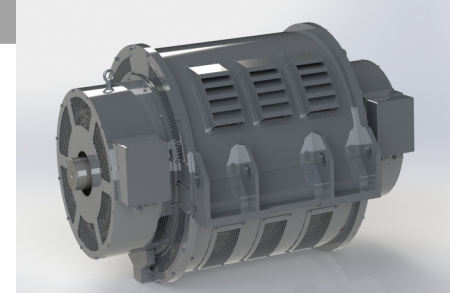


“Standard on PowerPRO2700 range”

**CONTINUOUS POWER
IN YOUR CONTROL**



Kinetic Energy Module “Automatic bearing lubrication” 动能模块自动轴承润滑



- Continuous and controlled lubrication while running (No STOP)
连续润滑
- Refill of grease reservoirs 1x per year while running (No STOP)
每年补油一次
- Recommended overhaul time once every 10 years 推荐每10年大修
- Calculated bearing lifetime of 10 years
轴承计算寿命10年

“Low service requirements = Low TCO”

低服务需求=低总有用成本



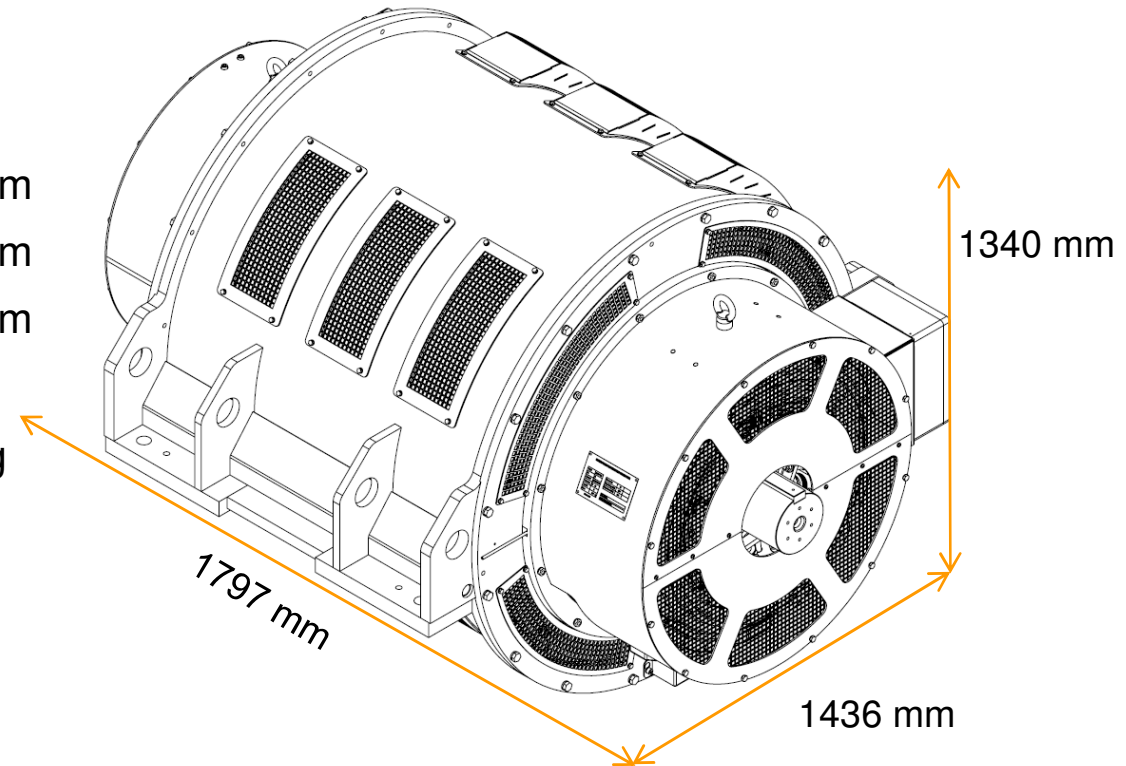
Kinetic Energy Module “figures” 动能模块参数

Dimensions and weight 尺寸和重量:

- Length长: 1.797 m
- Width宽: 1.436 m
- Height高: 1.340 m
- Footprint占地面积: 2,58 m²
- Total总重: 5.800 kg

Characteristics 特性

- Insulation Class绝缘等级:F
- RAL Color颜色: 7024 (anthracite烟黑色)



**CONTINUOUS POWER
IN YOUR CONTROL**



Advanced Data Collection 先进的数据采集

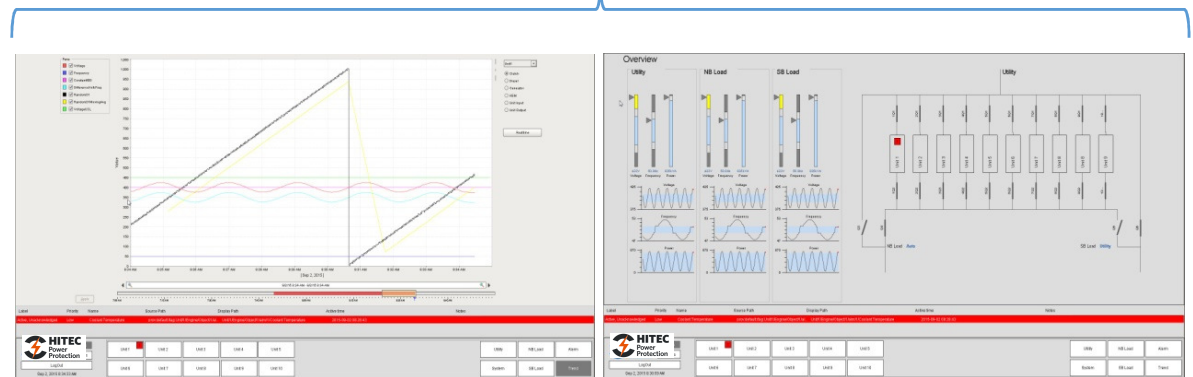


Data collection
数据采集



Secured Data Storage on site
数据安全存储于现场

Data processing 数据处理



Site owner
业主

Site operator
操作者

CONTINUOUS POWER
IN YOUR CONTROL



Advanced Communication Option

先进的通讯 可选



Customer X
客户X

Customer Y
客户Y

Customer Z
客户Z

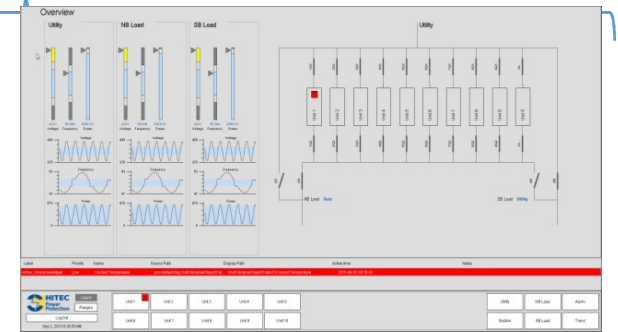
Data collection
数据采集



Data processing
数据处理

Secured data storage

数据安全存储

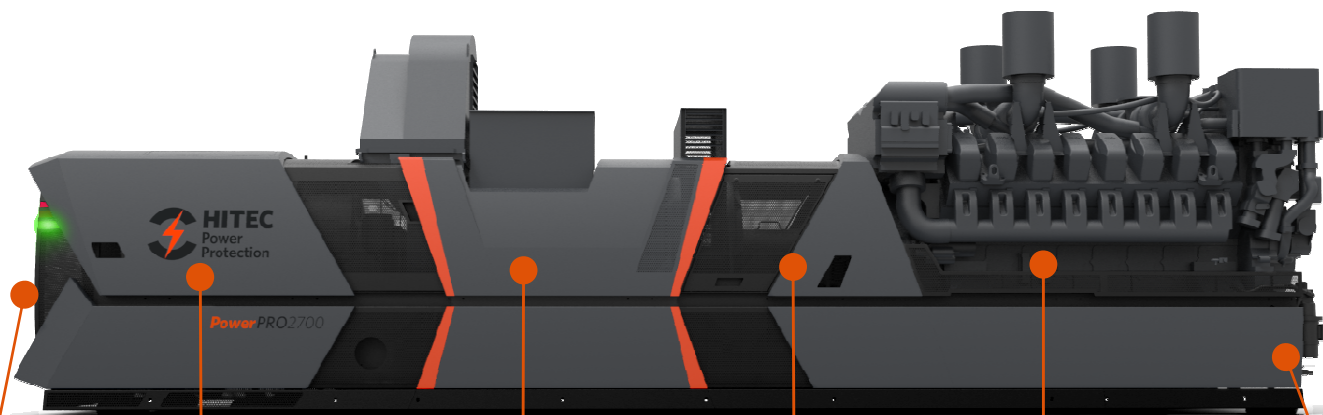


Secured login 安全注册
(Outstanding Service / Customer specific)
杰出服务/客户定义

CONTINUOUS POWER
IN YOUR CONTROL



Features特性



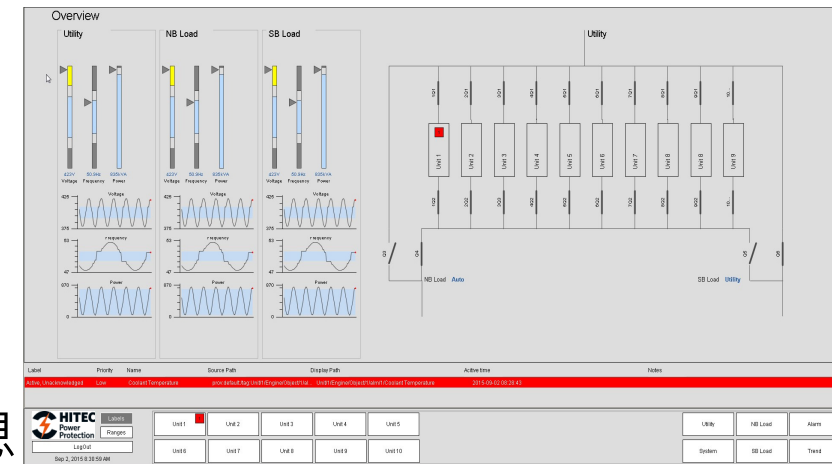
PowerPRO2700	Air inlet 进风口	Kinetic动能 energy 模块 module	Generator 发电机	Freewheel clutch 离合器	Diesel engine 柴油机	Base frame 底座
Vibration monitoring 振动监测	NA 不适用	Standard 标准	Standard 标准	NA 不适用	NA 不适用	Standard 标准
Condition monitoring 工况监测	NA 不适用	Standard 标准	Standard 标准	NA 不适用	NA 不适用	NA 不适用
Temperature monitoring 温度监测	Standard 标准	Standard 标准	Standard 标准	Standard 标准	Standard 标准	NA 不适用
Automatic bearing lubrication 自动轴承润滑	NA 不适用	Standard 标准	Standard 标准	Standard 标准	Standard 标准	NA 不适用
Oil suppletion facility 机油补充设备	NA 不适用	NA 不适用	NA 不适用	NA 不适用	Optional 可选	NA 不适用

IN YOUR CONTROL



Powerful Service Platform 强大的操作平台

- Remote monitoring and control 远程监控
- Real time information and data 实时数据信息
- Powerful alarm management for faster response
强大的报警管理，更快响应
- Continuous diagnostics monitoring for improved predictive maintenance
不间断诊断监视，改进预防性保养
- Easy to operate and less training required 易于操作，减少培训需求



“机器健康监测对评估设备状况以及执行预防性维护保养是非常必要的”

**CONTINUOUS POWER
IN YOUR CONTROL**

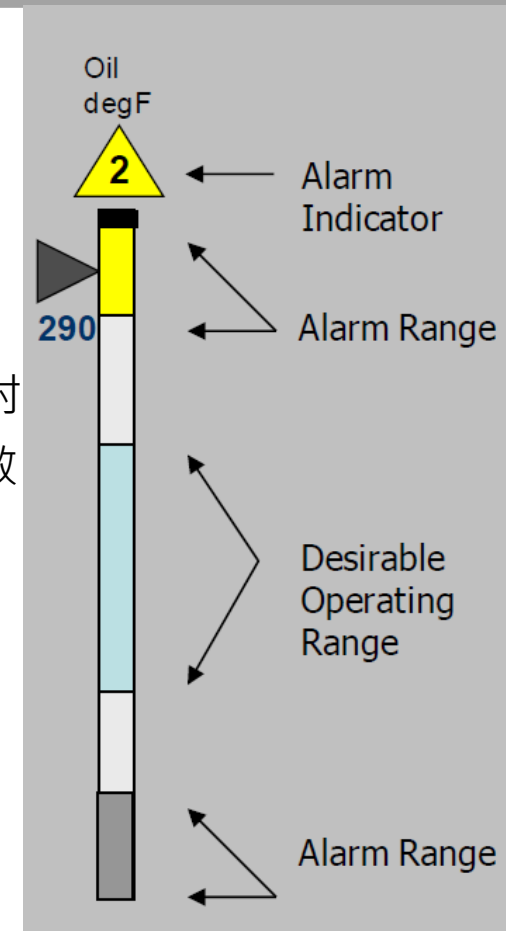


Why High Performance HMI 高性能人机界面

- Better graphics for operations effectiveness (**Less=More**)更好图形，有效操作
- Provides information instead of displayed numbers提供信息代替显示数字
- Limited use of colours, only in case of alarm (action).限制使用颜色，仅在报警时
- Properly formatted trends or important parameters正确格式化的趋势或重要参数
- Values related to normal, abnormal or alarm conditions
数值涉及运行正常，异常或者警报状态
- Logical and consistent navigational methods
逻辑与一致性的菜单导航方法
- Validation and security measures 验证和安全措施

“As an operator I can take action before alarms occur!”

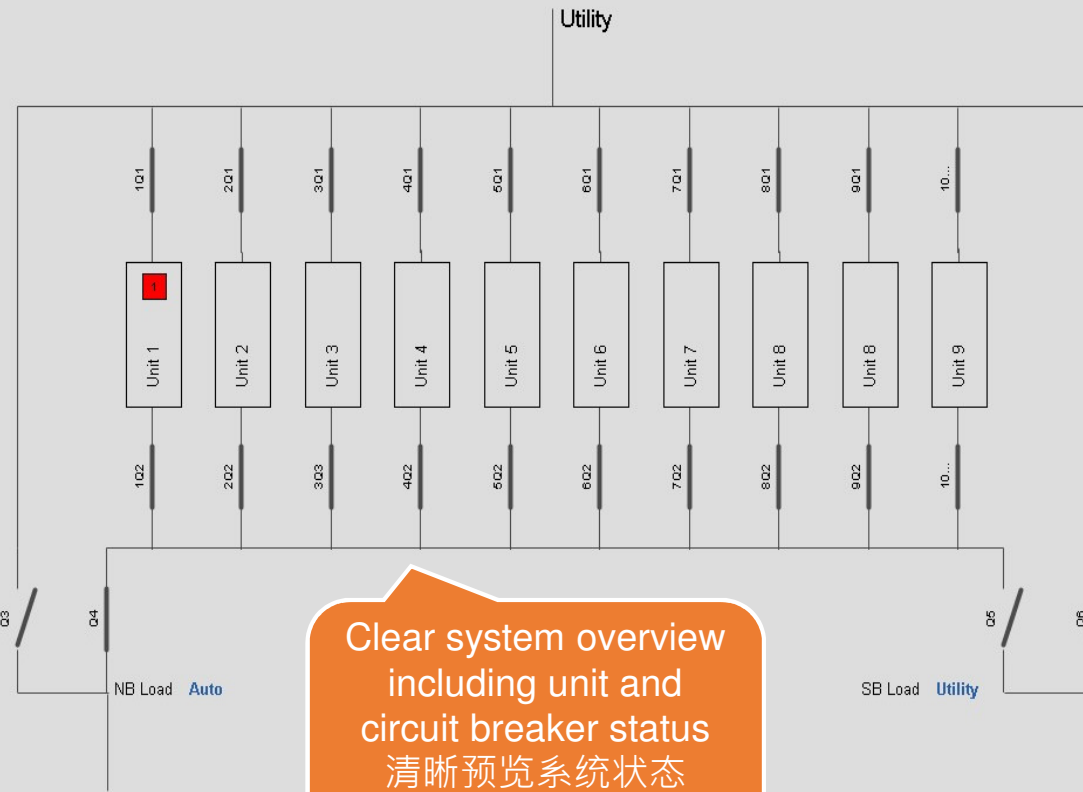
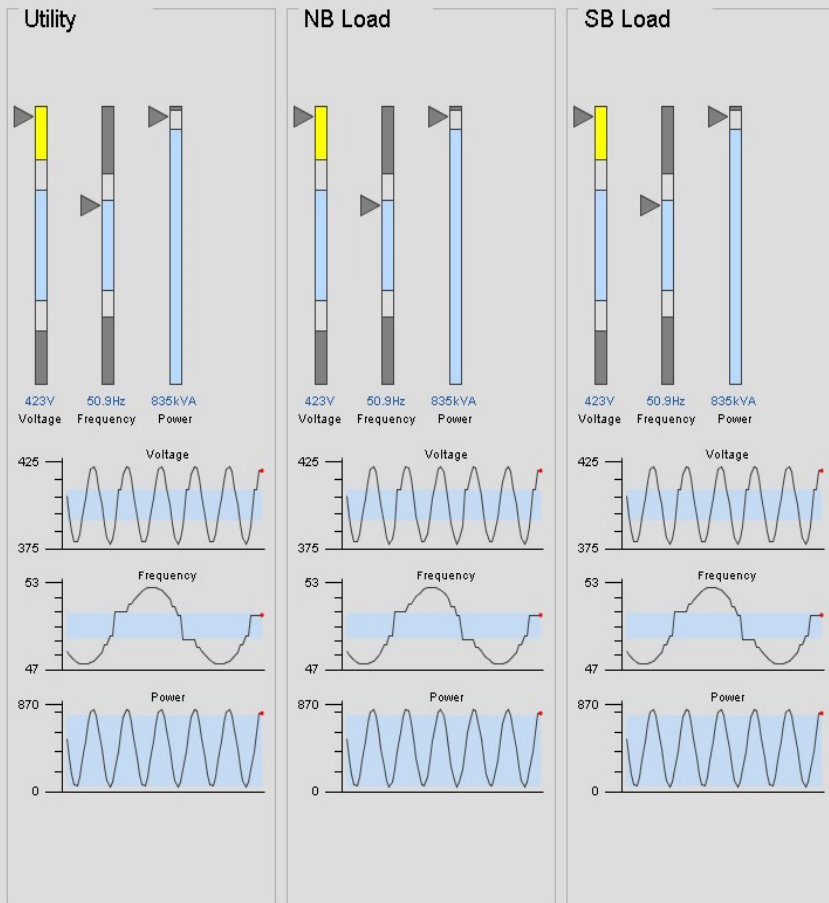
操作着可在警报发生前采取行动



**CONTINUOUS POWER
IN YOUR CONTROL**



Overview



Clear system overview including unit and circuit breaker status
 清晰预览系统状态包括机组以及断路器

Label	Priority	Name	Source Path	Display Path	Active time	Notes
Active, Unacknowledged	Low	Coolant Temperature	prov.default/tag:Unit1/Engine/Object1/al...	Unit1/Engine/Object1/alm1/Coolant Temperature	2015-09-02 08:28:43	

HITEC Power Protection

Labels
Ranges

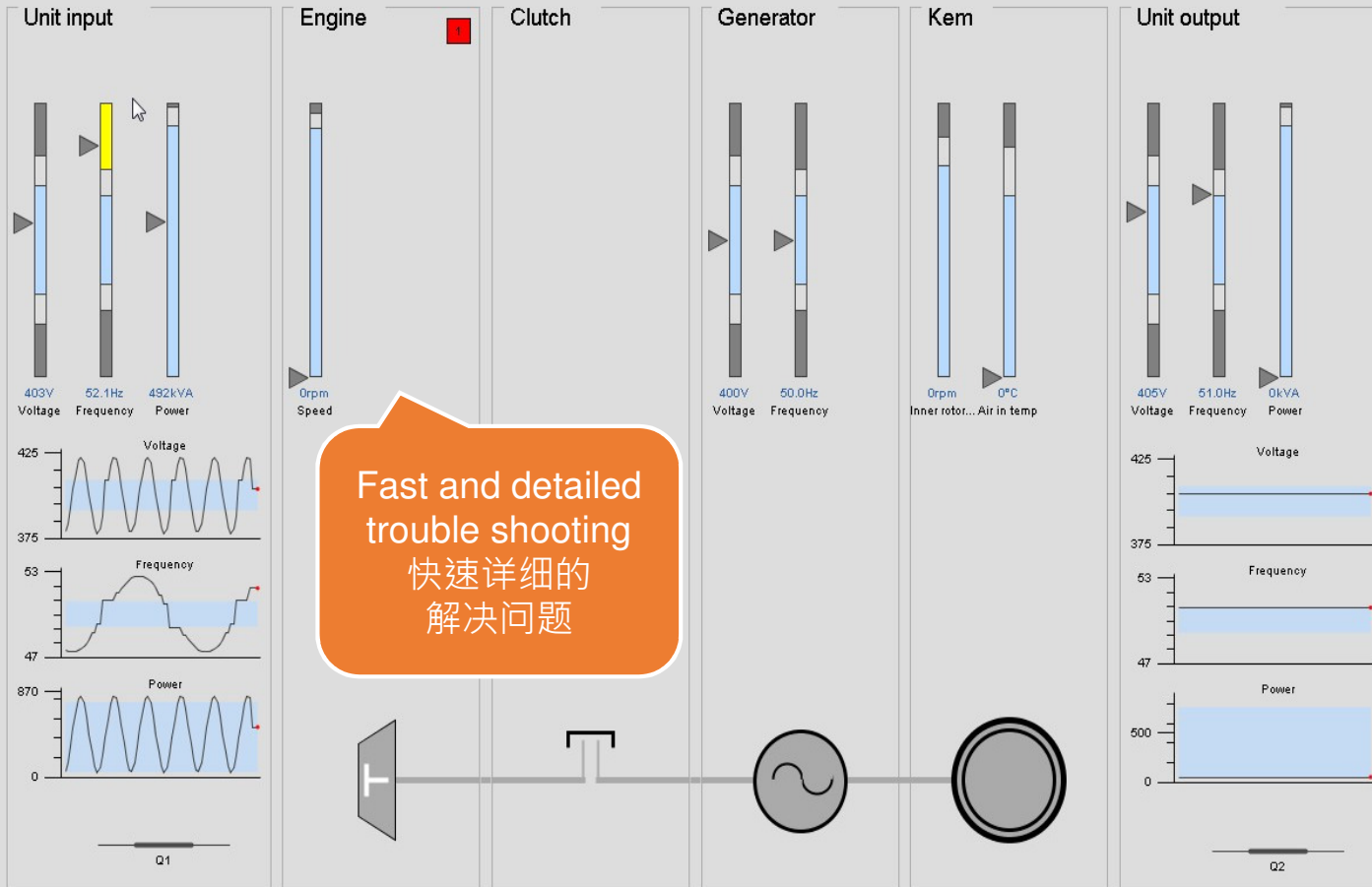
LogOut

Sep 2, 2015 8:30:59 AM

Unit 1	Unit 2	Unit 3	Unit 4	Unit 5
Unit 6	Unit 7	Unit 8	Unit 9	Unit 10

Utility	NB Load	Alarm
System	SB Load	Trend

Unit 1



Fast and detailed
trouble shooting
快速详细的
解决问题

Control panel

UPS Mode:

NB Mode:

SB Mode:

System Test:

Engine Test:

Unit Load Test:

Unit Service Mode:

System Maintenance Reset:

Unit Selection:

Label	Priority	Name	Source Path	Display Path	Active time	Notes
Active, Unacknowledged	Low	Coolant Temperature	prov.default/tag/Unit1/Engine/Object1/al...	Unit1/Engine/Object1/alm1/Coolant Temperature	2015-09-02 08:28:43	

HITEC Power Protection

Labels
Ranges

LogOut

Sep 2, 2015 8:31:36 AM

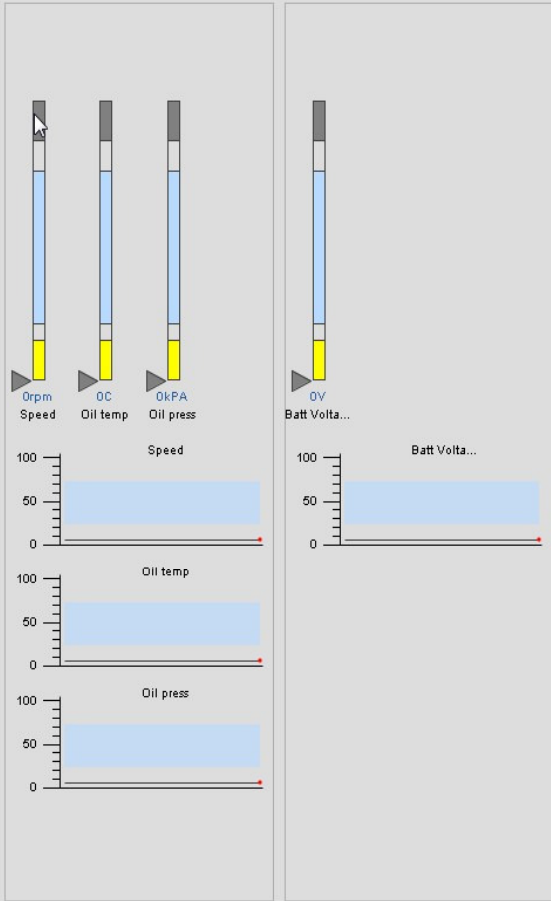
Unit Input Engine 1 Clutch Generator Kern Unit Output

Home Back Forward

Utility NB Load Alarm

System SB Load Trend

Engine



Part	Status
Diesel Engine	Running
Pre Lub Pump	Stopped
Pre Heating	Stopped
Fuel Pump	Active
Diesel Engine Cooling	Active
RSP	Inactive

Measurement	Value
Start Counter	25
Running Hours	14 h
Fuel consumption	400 l/h
Coolant temperature	97 C

Detailed information available in 3 simple clicks
 点击3次
 便可获取获取详细信息

Control panel

Pre-Lubrication

Manual

Label	Priority	Name	Source Path	Display Path	Active time	Notes
Active, Unacknowledged	Low	Coolant Temperature	prov:default/tag:Unit1/Engine/Object1/al...	Unit1/Engine/Object1/alm/1/Coolant Temperature	2015-09-02 08:28:43	

Labels

Ranges

LogOut

Sep 2, 2015 8:32:22 AM

Home

Back

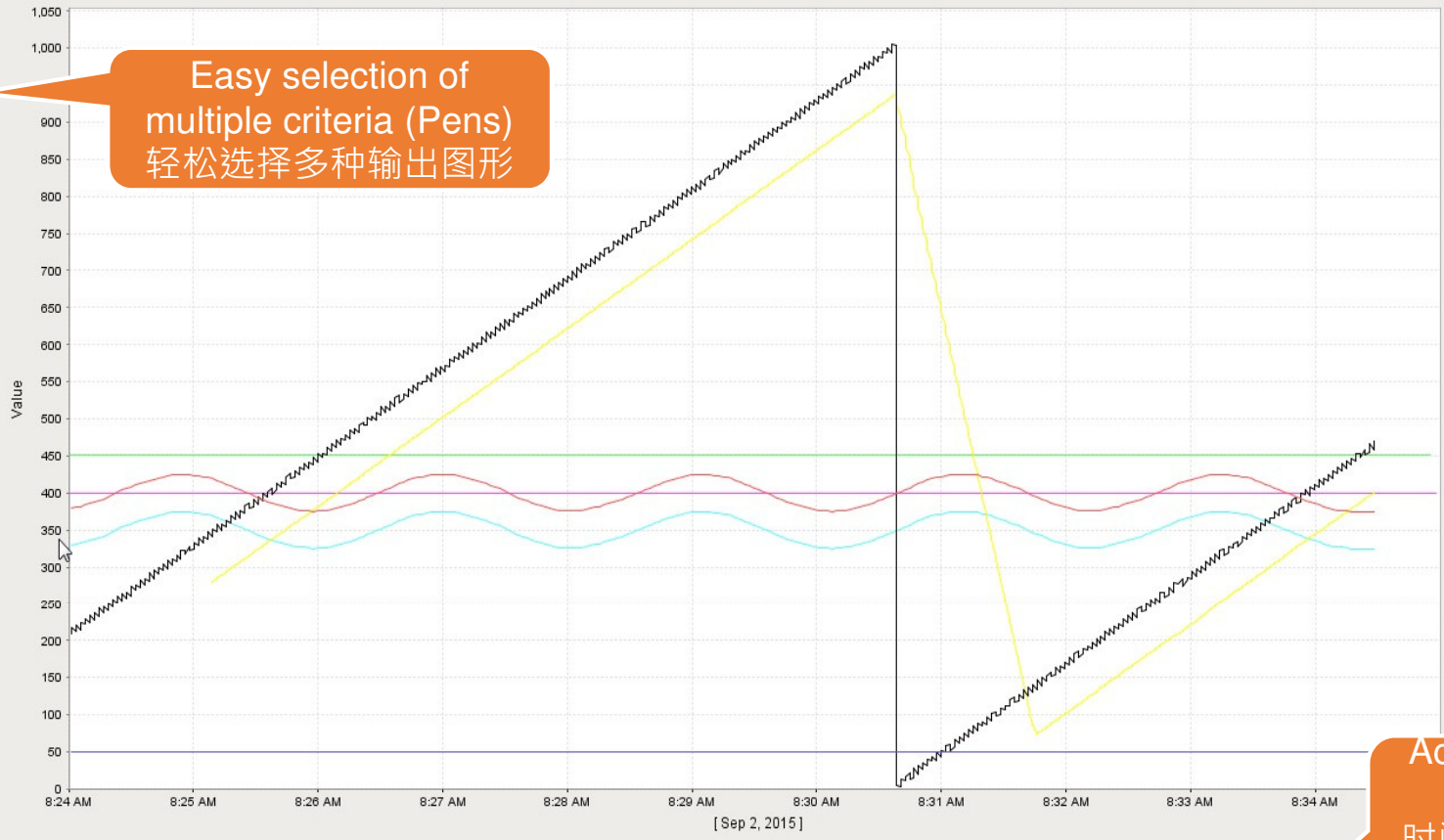
Forward

Alarm

Trend

- Pens
- Voltage
 - Frequency
 - Constant400
 - DifferenceVolt-Freq
 - RandomD1
 - RandomD1MovingAvg
 - VoltageUCL

Easy selection of multiple criteria (Pens)
轻松选择多种输出图形



Unit1

- Clutch
- Diesel
- Generator
- KEM
- Unit Input
- Unit Output

Realtime

Accurate Data in time path available.
时间轴上显示精确数据

Apply

Label	Priority	Name	Source Path	Display Path	Active time	Notes
Active_Unacknowledged	Low	Coolant Temperature	prov:default/tag:Unit1/Engine/Object1/al...	Unit1/Engine/Object1/alm/1/Coolant Temperature	2015-09-02 08:28:43	



LogOut

Sep 2, 2015 8:34:33 AM

Unit 1	Unit 2	Unit 3	Unit 4	Unit 5
Unit 6	Unit 7	Unit 8	Unit 9	Unit 10

Utility	NB Load	Alarm
System	SB Load	Trend

<input type="checkbox"/> Current State	Priority	Name	Source Path	Display Path	Active Time	Notes
<input type="checkbox"/> Active, Unacknowledged	Low	Coolant Temperature	prov.default/tag:Unit1/Engine/Object1/al...	Unit1/Engine/Object1/alm1/Coolant Temperature	2015-09-02 08:42:31	

Overview of events, priority, timeline and status
各种事件预览

Event State	Priority	Name	Source Path	Display Path	Event Time	Ack'd By	Event Value
Active	Low	Coolant Temperature	prov.default/tag:Unit1/Engine/Object1/alm1:/al...	Unit1/Engine/Object1/alm1/Coolant Temperature	2015-09-02 08:42:31		1
Clear	Low	Coolant Temperature	prov.default/tag:Unit1/Engine/Object1/alm1:/al...	Unit1/Engine/Object1/alm1/Coolant Temperature	2015-09-02 08:42:25		0
Ack	Low	Coolant Temperature	prov.default/tag:Unit1/Engine/Object1/alm1:/al...	Unit1/Engine/Object1/alm1/Coolant Temperature	2015-09-02 08:37:46	Service	
Active	Low	Coolant Temperature	prov.default/tag:Unit1/Engine/Object1/alm1:/al...	Unit1/Engine/Object1/alm1/Coolant Temperature	2015-09-02 08:28:43		1
Active	Critical	Object 1 HighHigh	prov.default/tag:unit 1/alm/almDword1/bit0:/alm...	unit 1/alm/almDword1/bit0/Object 1 HighHigh	2015-09-02 08:28:43		1
Active	Low	Coolant Temperature	prov.default/tag:Unit1/Engine/Object1/alm1:/al...	Unit1/Engine/Object1/alm1/Coolant Temperature	2015-09-02 08:28:37		1
Ack	Low	Coolant Temperature	prov.default/tag:Unit1/Engine/Object1/alm1:/al...	Unit1/Engine/Object1/alm1/Coolant Temperature	2015-09-02 08:28:37		
Clear	Low	Coolant Temperature	prov.default/tag:Unit1/Engine/Object1/alm1:/al...	Unit1/Engine/Object1/alm1/Coolant Temperature	2015-09-02 08:28:33		
Active	Low	Coolant Temperature	prov.default/tag:Unit1/Engine/Object1/alm1:/al...	Unit1/Engine/Object1/alm1/Coolant Temperature	2015-09-02 08:28:29		1
Ack	Low	Coolant Temperature	prov.default/tag:Unit1/Engine/Object1/alm1:/al...	Unit1/Engine/Object1/alm1/Coolant Temperature	2015-09-02 08:28:29		
Clear	Low	Coolant Temperature	prov.default/tag:Unit1/Engine/Object1/alm1:/al...	Unit1/Engine/Object1/alm1/Coolant Temperature	2015-09-02 08:28:25		0
Active	Low	Coolant Temperature	prov.default/tag:Unit1/Engine/Object1/alm1:/al...	Unit1/Engine/Object1/alm1/Coolant Temperature	2015-09-02 08:28:21		1
Ack	Low	Coolant Temperature	prov.default/tag:Unit1/Engine/Object1/alm1:/al...	Unit1/Engine/Object1/alm1/Coolant Temperature	2015-09-02 08:28:21		
Clear	Low	Coolant Temperature	prov.default/tag:Unit1/Engine/Object1/alm1:/al...	Unit1/Engine/Object1/alm1/Coolant Temperature	2015-09-02 08:28:17		0
Active	Low	Coolant Temperature	prov.default/tag:Unit1/Engine/Object1/alm1:/al...	Unit1/Engine/Object1/alm1/Coolant Temperature	2015-09-02 08:28:13		1

8,803 events

Label	Priority	Name	Source Path	Display Path	Active time	Notes
Active, Unacknowledged	Low	Coolant Temperature	prov.default/tag:Unit1/Engine/Object1/al...	Unit1/Engine/Object1/alm1/Coolant Temperature	2015-09-02 08:42:31	



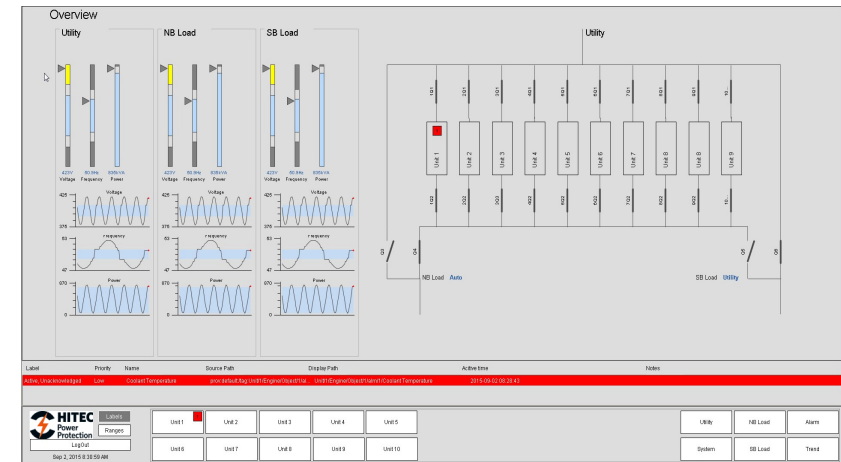
Unit 1 ■	Unit 2	Unit 3	Unit 4	Unit 5
Unit 6	Unit 7	Unit 8	Unit 9	Unit 10

Utility	NB Load	Alarm
System	SB Load	Trend

Sep 2, 2015 8:46:31 AM

Measurable Impact 重大影响

- Information instead of data
信息代替数据
- Active support instead of re-active
主动支持代替被动响应
- Operator and Hitec helpdesk have same information
操作着和Hitec服务台获得信息相同
- Automated reports for your convenience
自动报告为您提供便利
- Reduction of field service interventions
减少现场服务干预
- Reduction of unplanned maintenance
减少非计划性保养
- Detailed maintenance advise
详细的维护建议



**CONTINUOUS POWER
IN YOUR CONTROL**



The Solution Providers 解决方案供应商

We are 24/7 available for global field service, efficient maintenance and quick repairs.

Your uptime is our Mission.
提供全球7x24小时现在服务，快速有效的保养和维修

Field Service, inspections, training and service consultancy.
现场服务，检查，培训以及服务咨询

24/7 Helpdesk support, and maintenance advise can be provided due to our advanced remote monitoring platform.
7x24小时服务台支持，可通过先进的远程监测平台提供维护建议



**CONTINUOUS POWER
IN YOUR CONTROL**



PowerParts

- Our global parts network is available to meet your needs.
全球化的零件网络满足您的需求
- Repair and restore with original quality parts.
修理并恢复到最初品质
- Overhaul shops in The Netherlands, Taiwan and United States.
荷兰，台湾和美国拥有大修车间
- Fast and accurate delivery of original parts and lubricants
快速准确发送备件及润滑油
- Single resource for all your aftermarket needs
满足您所有售后服务需求

**CONTINUOUS POWER
IN YOUR CONTROL**



Dedicated to Safety and Quality 专注于安全及质量

- ISO 9001:2008认证
- VCA** 2008/5.1认证
- EMC directive 2004/108EC
- 依照EN6204-2
- Continuous quality improvement
持续的品质改善
 - Plan, Do, Check, Act
计划，执行，检查，行动



**CONTINUOUS POWER
IN YOUR CONTROL**



客户需求

Maximum reliability 最高可靠性

Lower servicing requirements and increased uptime
低服务需求 · 增加运行时间

Lower energy consumption and reduced operational costs
低能耗 · 降低运行成本

Reduce plant room space and increase revenue generating opportunities
降低空间需求 提升创收机会

A user friendly and improved working environment
用户友好和改良的工作环境

Remote support and condition based management
远程支持以及运行状态管理

Quality assured, reliable and simplified installation
质量保证 · 可靠以及简化安装

Minimize environmental impact
尽量减少对环境的影响

PowerPRO效益

The evolution of Hitec's dynamic energy storage technology
Hitec动态储能技术的进化

Automatic lubrication and monitoring systems that reduce downtime to one interval per year
自动润滑和监测系统使得停机间隔减少到每年一次

Optimised component design that delivers market leading efficiency
优化组件设计,具备市场领先的效率

Highest available power density per square metre
每平米最高的功率密度

Integrated noise reduction and air filtration
集成降噪和空气过滤

Embedded smart functionality, enhanced user connectivity and reporting
智能功能植入 增强用户连接及报告

Plug and play control cabling and connections
即插即用控制电缆及连接

Lower carbon footprint and no toxic batteries
更低碳排放,无毒电池组

CONTINUOUS POWER
IN YOUR CONTROL





**CONTINUOUS POWER
IN YOUR CONTROL**

Thank you 感谢您的关注